

Onboarding 101

*KHIE Transition to CRISP Shared Services:
Integration and Implementation*

June 4, 2025





Danielle Humes

*Information Systems Supervisor,
KHIE*



Agenda

- 1 Welcome
- 2 Timeline
- 3 Integration Phases
- 4 Connectivity
- 5 Onboarding
- 6 Questions



Technical Transition Leads



- » Connected to all acute care hospitals and most ambulatory facilities
- » Designated public health reporting authority for KY



- » CSS is the new technology partner for KHIE



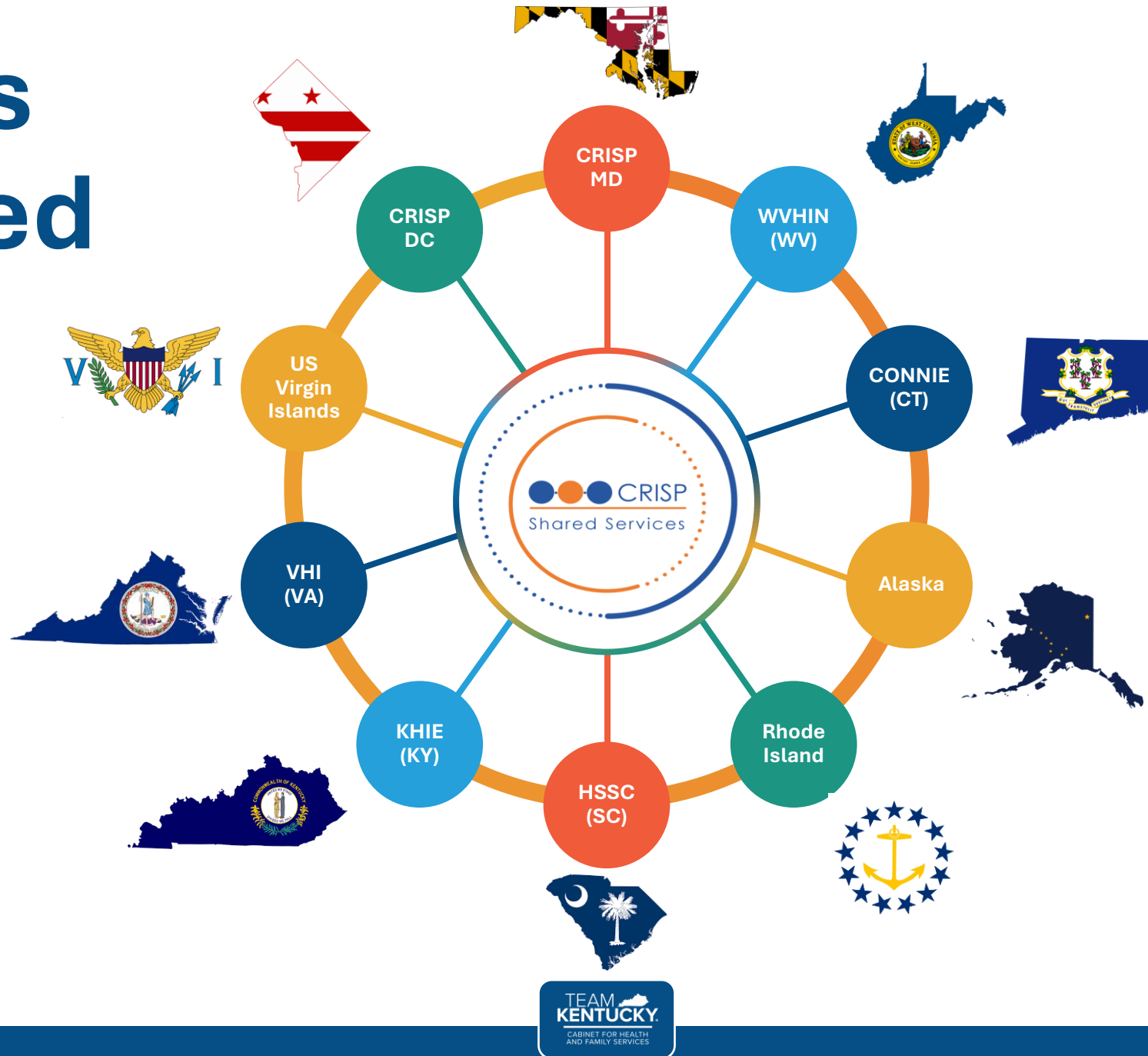
Alex Hughes
*Implementation Manager,
CSS*



Keishlyn Calhoun
*Technical Project Manager,
CSS*



Areas Served



CSS Technical Expertise



Implementation

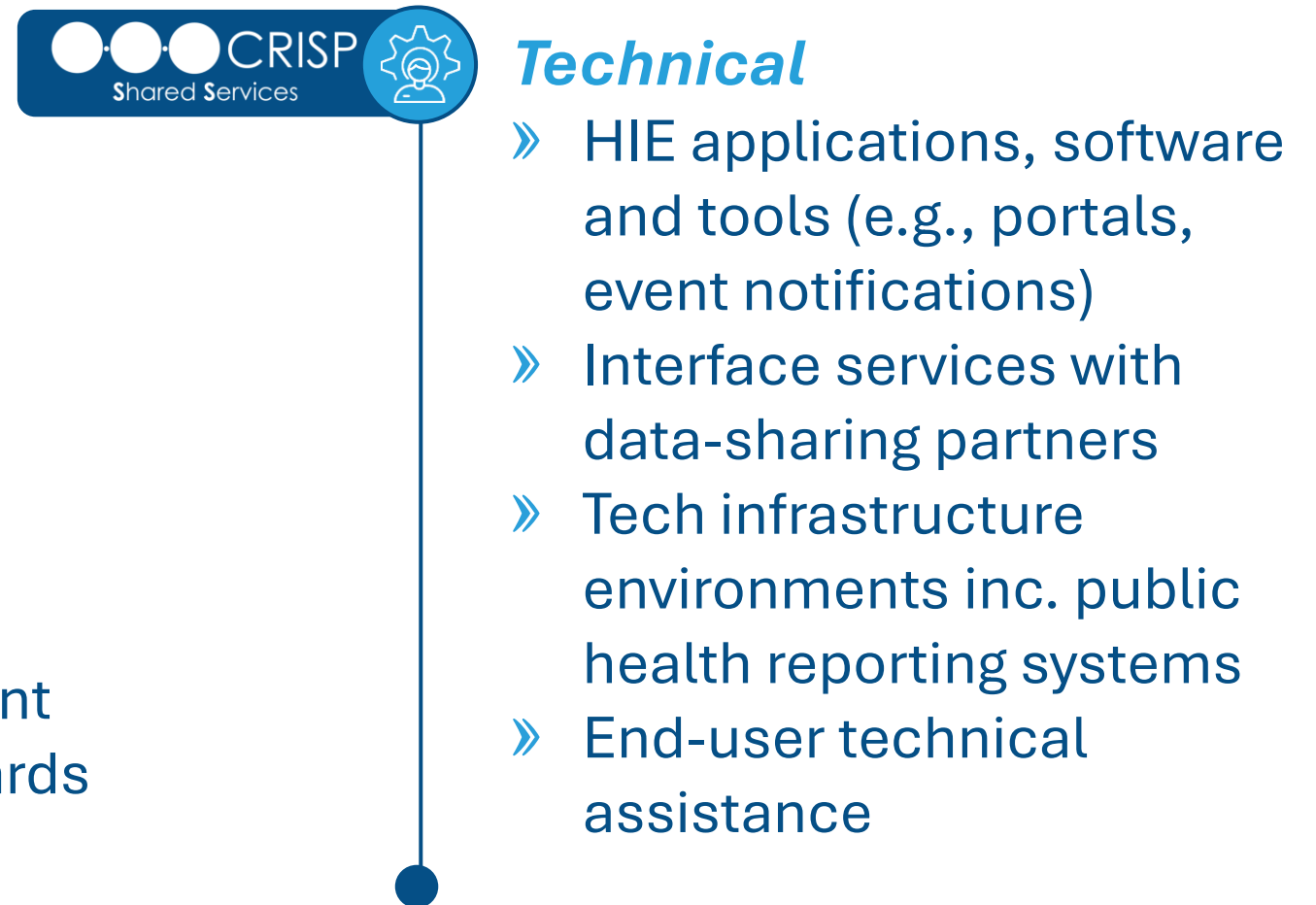
- » Successfully implemented and managed 8+ state and territory-wide infrastructure deployments
- » Currently implementing modernization projects with 14 state and local health departments nationwide
- » Delivering **11.5M+ clinical event** notifications into workflows per month



Integrations

- » 4,000+ individual data contributors (health systems, ambulatory providers, etc.) across 50+ discrete EMRs for an array of data types and use cases
- » Facilitating public health interoperability in 9 states and territories, including bi-directional eCR, eLR, SyS, immunizations, and PDMPs
- » Lead technical and programmatic integration with dozens of states and government agencies

KHIE vs. CSS: Partner Roles



KHIE Contacts: Who to Reach and Why



KHIE Outreach Coordinators:

- » Act as KHIE's participant and statewide engagement team
- » Focused on:
 - Participant and stakeholder engagement
 - New participant and program interest and awareness
 - Event participation and communications campaigns
 - Portal user trainings

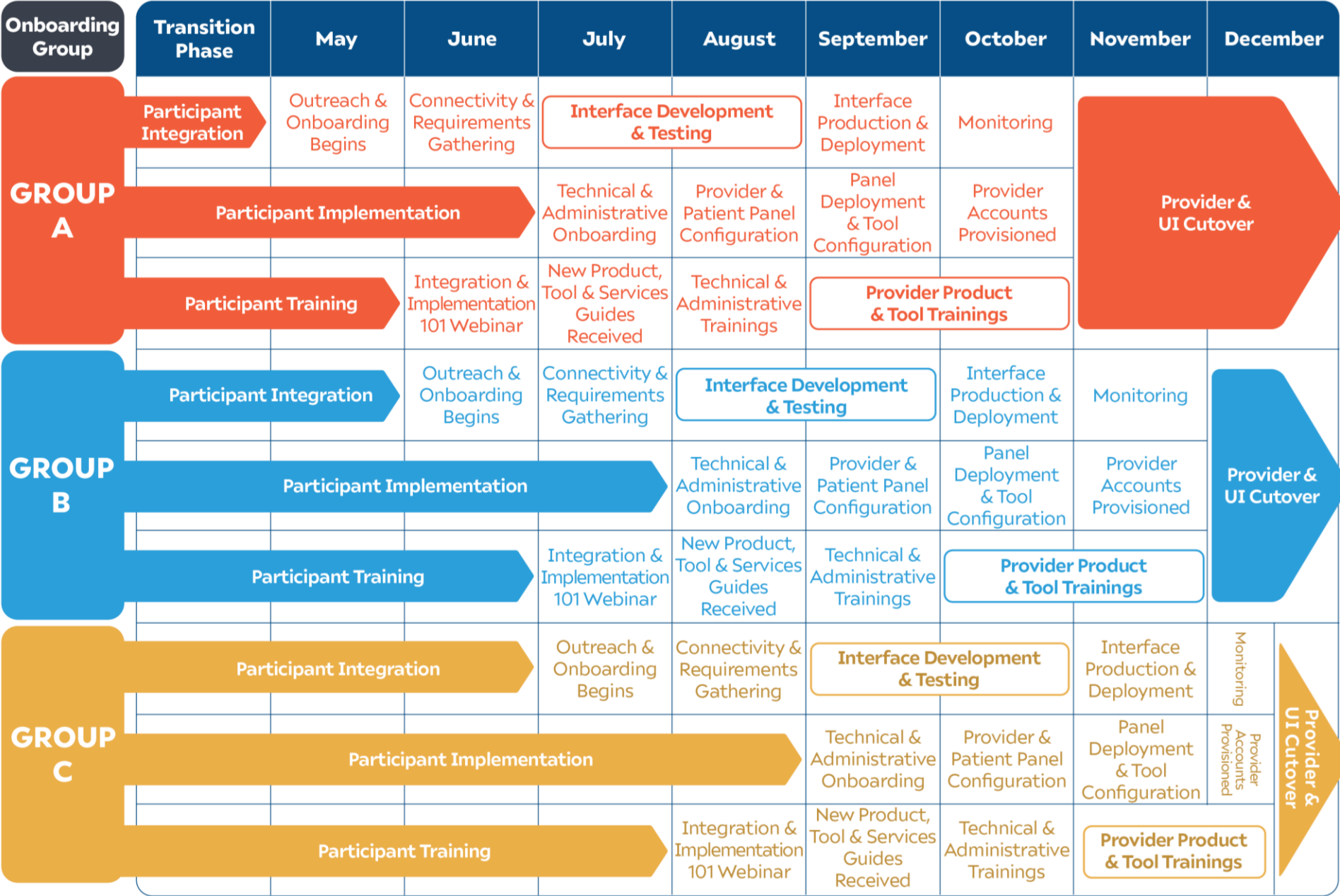


KHIE Account Managers:

- » Serve as dedicated guides through the participant journey
- » Focused on:
 - Onboarding and integration coordination
 - Training and support throughout implementation
 - Troubleshooting technical issues
 - Liaising with CSS for deep technical support



Transition to CSS: KHIE Participant Onboarding Timeline



Integration Phase Timeline

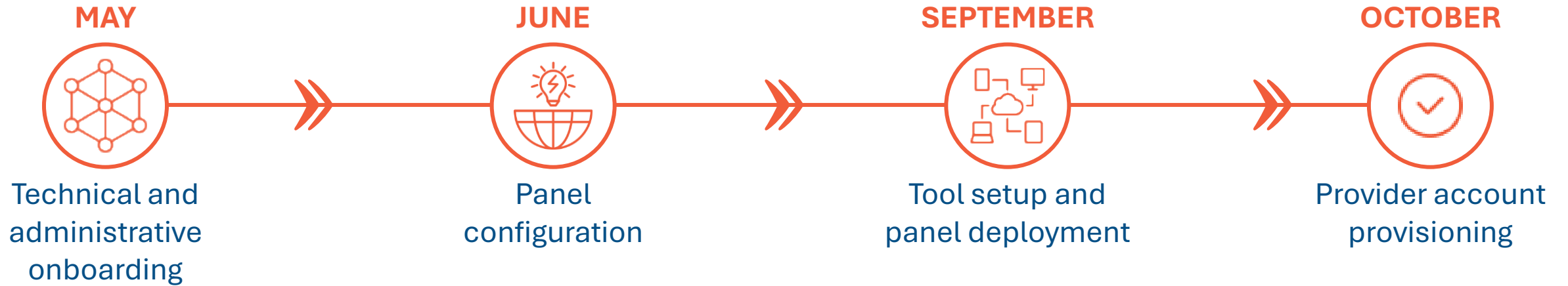


Integration Phase Steps

- » Completing connectivity intake forms (data types such as ADT, ORU, CCDA)
- » Developing and testing interfaces with CSS
- » Transitioning any Platinum/XDS or repository-based connections, if applicable
- » Setting up new secure connections (e.g., VPN, HTTPS, SFTP)



Implementation Phase Timeline

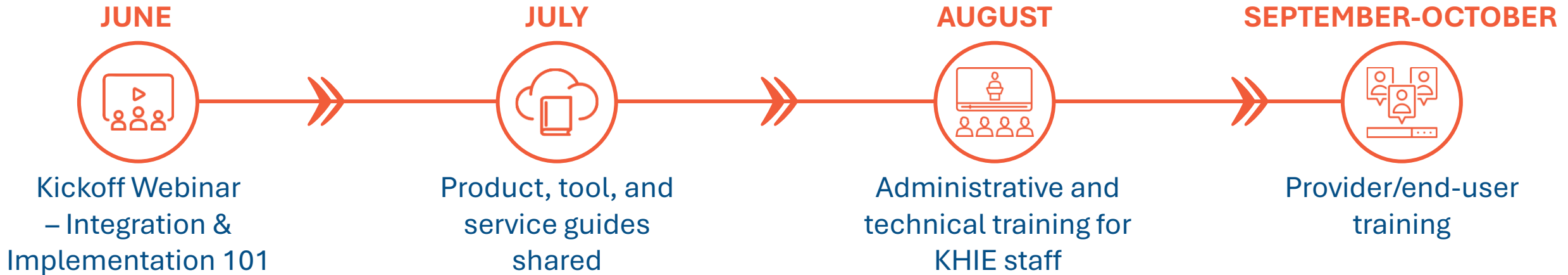


Implementation Phase Steps

- » Providing any necessary administrative and technical information
- » Verifying patient and provider panel configurations
- » Participating in readiness assessments and pre-cutover validation



Training Phase Timeline



Training Phase Steps

- » Initial integrations and implementation training begins
- » Role-based training modules for admins, technical staff, and end users
- » On-demand documentation and demos



Integrating to New System



Connectivity Overview

Onboarding 101

Completing Intake Forms



ADT intake forms are required for data types:

» ADT » SS



ORU intake form is required for:

» LAB » RAD » TRN



CCDA intake is required for ITI-41 Provide and Register Document

- » If you're currently a Platinum Service Member sharing CCDAs to KHIE via QnR, you will need to change to an ITI-41 Provide and Register Interface in order to continue sharing with KHIE
- » Your ability to query and retrieve CCDAs from KHIE will transition with minimal changes



Questions about intake forms?

- » Contact your account manager to register for weekly office hours

Deadline for completed forms and survey to remain on target: June 13



Connectivity Types



VPN Connectivity:

- » Depending on the number of data feeds you will be submitting, we will assign specific ports and share them within the VPN form
- » You will be required to fill the form with your information and return it to CSS
- » CSS will build the VPN tunnel and share the PSK with your technical resource



Webservice Connectivity:

- » You will be required to provide CSR to initiate generation of CSS public certificates
 - Note: *If test and prod are on separate servers, a separate CSR is required for each*
- » CSS will provide:
 - HTTPs URLs for each data type you will be submitting
 - WSDL and specifications for connection

Connectivity Types



SFTP

- » Three options for account types
- » You will need to designate a technical resource or point of contact (POC) for SFTP setup
- » KHIE will provide log-in credentials to SFTP test and prod folder access



CCDA Provide and Register to KHIE

- » You will be required to provide CSR to initiate generation of CSS public certificates
 - Note: *If test and prod are on separate servers, a separate CSR is required for each*
- » CSS will provide:
 - A cert for you to add to your trust store
 - Test and production HTTPS URLs for your ITI-41 Interface



CCDA Query and retrieve from KHIE

- » If PIX Query is initiating from the same server as your ITI-41, no action is needed
- » If PIX Query is initiating from a different server, a CSR and certificate exchange is required
- » CSS will provide test and production endpoint HTTPS URLs; these will be different from ITI-41 endpoints



Onboarding Standard Interfaces



Connect to test endpoint



Send test (non-PHI) messages to the endpoint that meets all specifications as indicated in intake forms

- » Test messages required for each data type
- » For ADTs, provide test messages for each trigger event expected in production



CSS will review and validate the test messages for content and format compliance



Onboarding Standard Interfaces



CSS will assign to an engineer who will do interface development



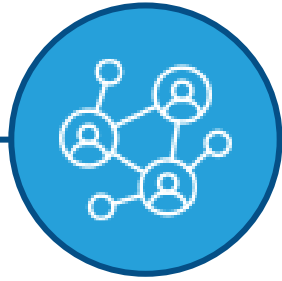
CSS will perform internal QA and Code review



CSS will coordinate go live with participant



Onboarding Standard Interfaces



**Participant to begin
sending data in production**

- » CSS to provide production monitoring for up to a week



**CSS to transition interface
to production maintenance
with Interface Support**

- » For any production issues after monitoring period, contact:

interfacesupport@crisphealth.org



Onboarding Public Health Interfaces



Send a test (non-PHI) message to the endpoint that meets all specifications as indicated by Kentucky Department of Health (KDPH)

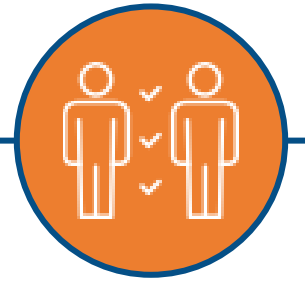
» Test messages required for each data type



CSS will review test messages and confirm successful processing



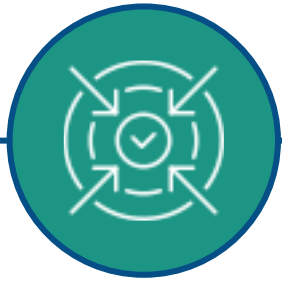
Participant to begin sending data for content validation



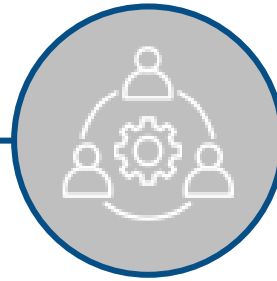
KHIE/CSS to perform initial content validation



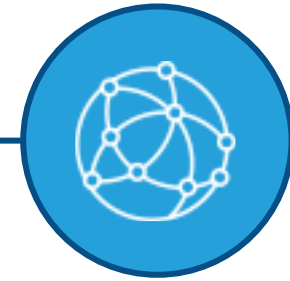
Onboarding Public Health Interfaces



**KDPH to complete
final content validation**



**Coordinate with
participant/KDPH on
sending production
data to CSS production
environment for go live
and production
validation and
monitoring**



**CSS to transition interface
to production maintenance
with Interface Support**

» For any production issues
after monitoring period,
contact:

interfacesupport@crisphealth.org





IN PARTNERSHIP WITH



Questions?

Visit our website: www.khie.ky.gov

Email us: khie@ky.gov

*For any production issues after monitoring period,
contact: interfacesupport@crisphealth.org*

